

Box Properties

--Description--

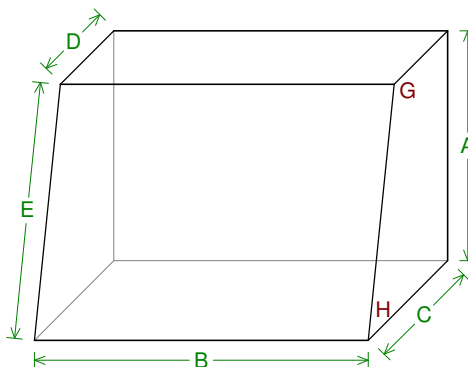
Name:
 Type: Vented Box
 Shape: Prism, slanted front

--Box Parameters--

Vb = 30, liters
 V(total) = 34,78 liters
 Fb = 42,16 Hz
 F3 = 39,48 Hz
 Fill = minimal

--Vents--

No. of Vents = 1
 Vent shape = round
 Vent ends = one flared
 Dv = 68, mm
 Lv = 157,6 mm



--External Dimensions--

A = 398, mm
 B = 578, mm
 C = 259,6 mm
 D = 175, mm
 E = 407,1 mm

--Internal Dimensions--

A = 360, mm
 B = 540, mm
 C = 217,2 mm
 D = 140,6 mm
 E = 368, mm

--Wall Thickness--

Front = 19, mm
 Side = 19, mm

--Angles--

G = 102,°
 H = 78,°

Driver Properties

--Description--

Name: BX-P12
 Type: Standard one-way driver
 Company: Zachry

--Configuration--

No. of Drivers = 1

--Mechanical Parameters--

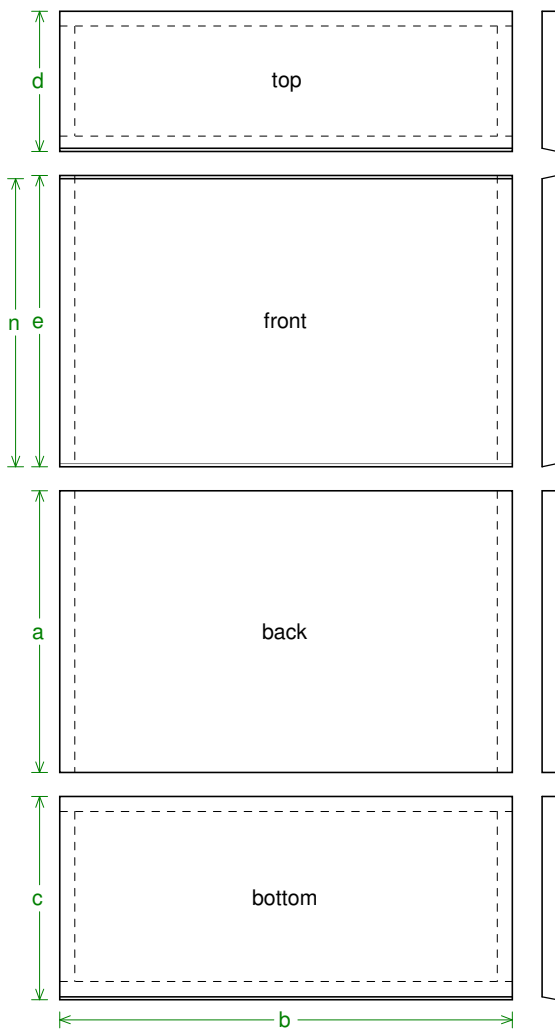
Fs = 31, Hz
 Qms = 5,97
 Vas = 57, liters
 Mms = 155, g
 Xmax = 9,5 mm
 Sd = 490, sq.cm

--Electrical Parameters--

Qes = 0,66

--Electromech. Parameters--

Qts = 0,59



Box Parts

Box Shape: Slanted Front Prism

- 1 Top: height (d) = 179,1 mm
width (b) = 578, mm
thickness = 19, mm
cut angle (front edge only) = 12°
- 1 Front: total height (e) = 372,1 mm
exposed surface height (n) = 368, mm
width (b) = 578,, thickness = 19, mm
top/bottom cut angles = $\pm 12^\circ$
- 1 Back: height (a) = 360, mm
width (b) = 578,, thickness = 19, mm
- 1 Bottom: height (c) = 259,6 mm
width (b) = 578,, thickness = 19, mm
cut angle (front edge only) = 12°
- 2 Sides: top depth (k) = 140,6 mm
height (a) = 360, mm
bottom depth (m) = 217,2 mm
front length (n) = 368, mm
thickness = 19, mm
Angle g = 102° , Angle h = 78°

--Driver Mounting--
Mounting: Flush

--Vent Parts--

- 1 Duct: outside diameter (o) = 74,35 mm
inside diameter (p) = 68, mm
length (q) = 157,6 mm

