

Box Properties

--Description--

Name:

Type: Vented Box

Shape: Prism, slanted front

--Box Parameters--

Vb = 33, liters

V(total) = 37,76 liters

Fb = 40,6 Hz

F3 = 37,82 Hz

Fill = minimal

--Vents--

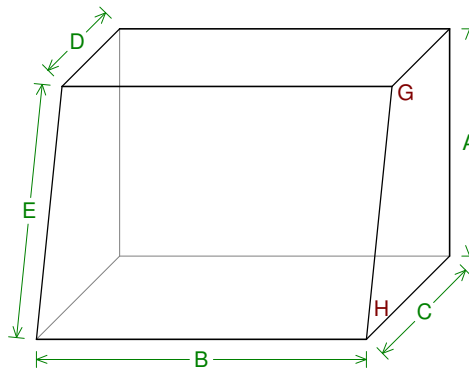
No. of Vents = 1

Vent shape = round

Vent ends = one flared

Dv = 68, mm

Lv = 153,3 mm



--External Dimensions--

A = 398, mm

B = 578, mm

C = 274,6 mm

D = 190, mm

E = 407,1 mm

--Internal Dimensions--

A = 360, mm

B = 540, mm

C = 232,1 mm

D = 155,6 mm

E = 368, mm

--Wall Thickness--

Front = 19, mm

Side = 19, mm

--Angles--

G = 102,°

H = 78,°

Driver Properties

--Description--

Name: BX-P12

Type: Standard one-way driver

Company: Zachry

--Configuration--

No. of Drivers = 1

--Mechanical Parameters--

Fs = 31, Hz

Qms = 5,97

Vas = 57, liters

Mms = 155, g

Xmax = 9,5 mm

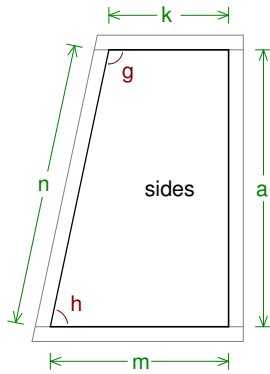
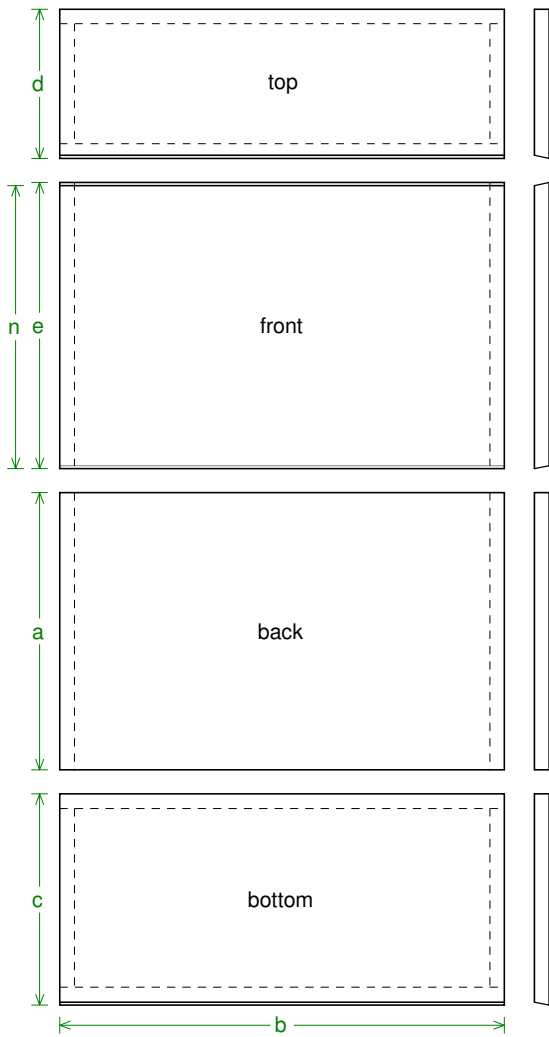
Sd = 490, sq.cm

--Electrical Parameters--

Qes = 0,66

--Electromech. Parameters--

Qts = 0,59



Box Parts

Box Shape: Slanted Front Prism

- 1 Top: height (d) = 194,1 mm
width (b) = 578, mm
thickness = 19, mm
cut angle (front edge only) = 12°
- 1 Front: total height (e) = 372,1 mm
exposed surface height (n) = 368, mm
width (b) = 578,, thickness = 19, mm
top/bottom cut angles = $\pm 12^\circ$
- 1 Back: height (a) = 360, mm
width (b) = 578,, thickness = 19, mm
- 1 Bottom: height (c) = 274,6 mm
width (b) = 578,, thickness = 19, mm
cut angle (front edge only) = 12°
- 2 Sides: top depth (k) = 155,6 mm
height (a) = 360, mm
bottom depth (m) = 232,1 mm
front length (n) = 368, mm
thickness = 19, mm
Angle g = 102° , Angle h = 78°

--Driver Mounting--
Mounting: Flush

--Vent Parts--

- 1 Duct: outside diameter (o) = 74,35 mm
inside diameter (p) = 68, mm
length (q) = 153,3 mm

